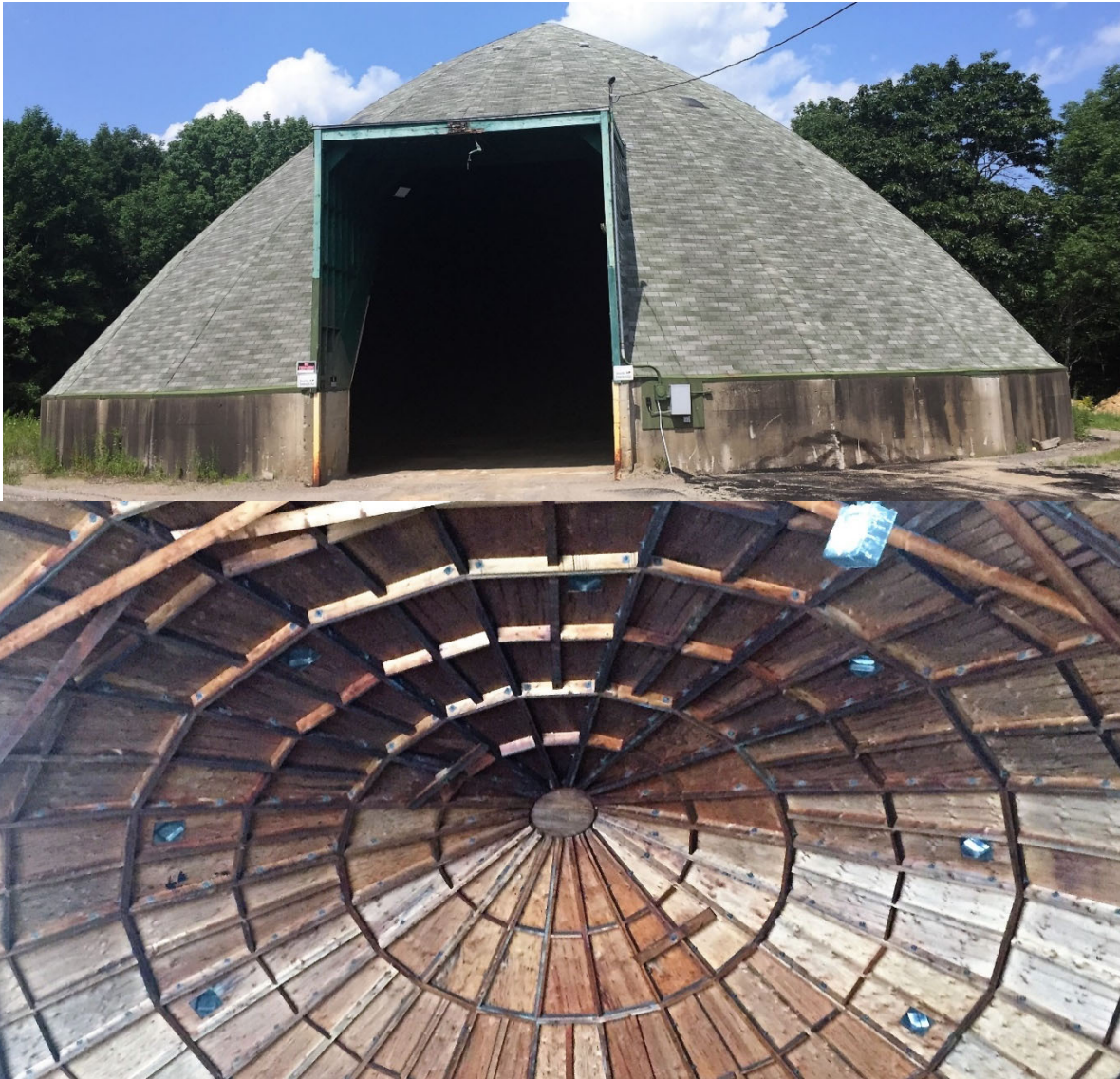


# Toolbox Talks

## Dome Structures



**Definition:** Dome Buildings are typically wood framed with all supporting framing members meeting at a central point in the peak. The components are typically built on the ground and craned into position. Each section is held together with series of bolts. The exterior is sheathed with plywood and covered with asphalt shingles

<b>Typical Hazards:</b>	<b>Owner Considerations:</b>
<ul style="list-style-type: none"><li>• Vegetation Growth against the building</li><li>• Sand/Salt stored against metal walls</li><li>• Rust and Corrosion</li><li>• Loose Bolts</li><li>• Holes and/or Penetrations</li><li>• Foundation Cracks/Exposed Rebar</li><li>• Equipment strikes to structure</li></ul>	<ul style="list-style-type: none"><li>- Maintain clear access around the building</li><li>- Do not exceed fill line when loading</li><li>- Keep Sand/Salt away from metal components</li><li>- Periodically check bolts for tightness</li><li>- Inspect structure at least twice a year, before and after winter</li></ul> <p><b>SCAN for FEMA Snow Load Safety Guide</b></p> 